



Routing Information Service Status and Plans

James Aldridge, Maximo Alves, Lorenzo Colitti,
Daniel Karrenberg, Henk Uijterwaal, Arife Vural,
Matthew Williams

RIPE NCC

RIPE 46, Amsterdam, September 2003

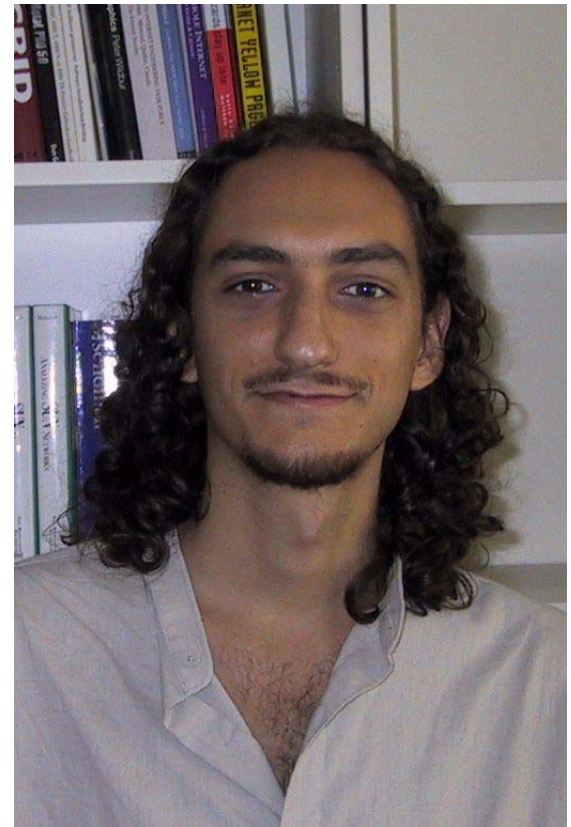


Overview

- Staff
- RIS Web Access
- Remote Route Collectors
- RIS Developments
- Ongoing Projects
- Epilogue

Staff

- Student from “Roma Tre” University, Lorenzo Colitti, with us for nine months
- Looking into properties of the IPv6 BGP routing table
- Specifics TBD

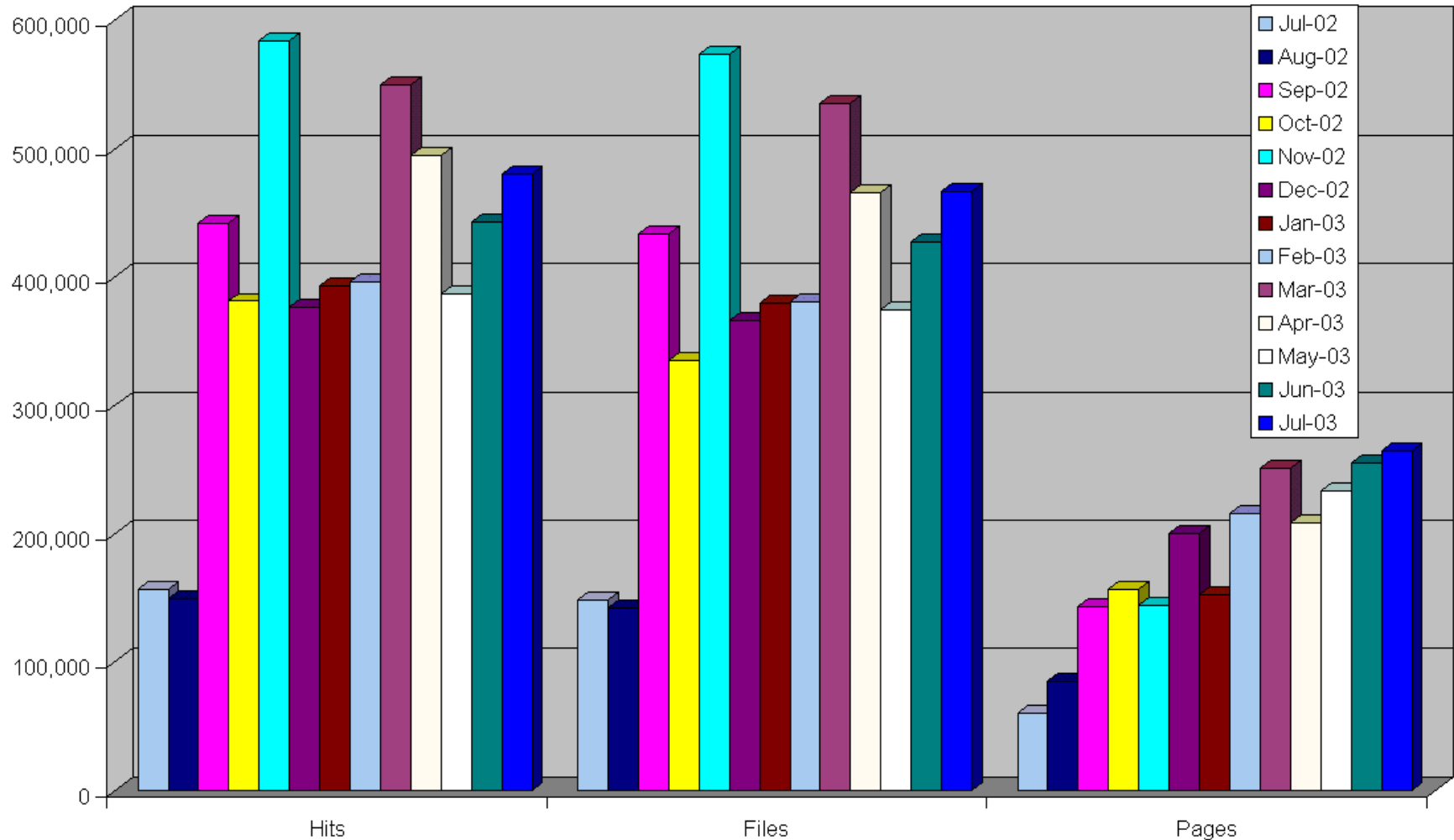




Overview

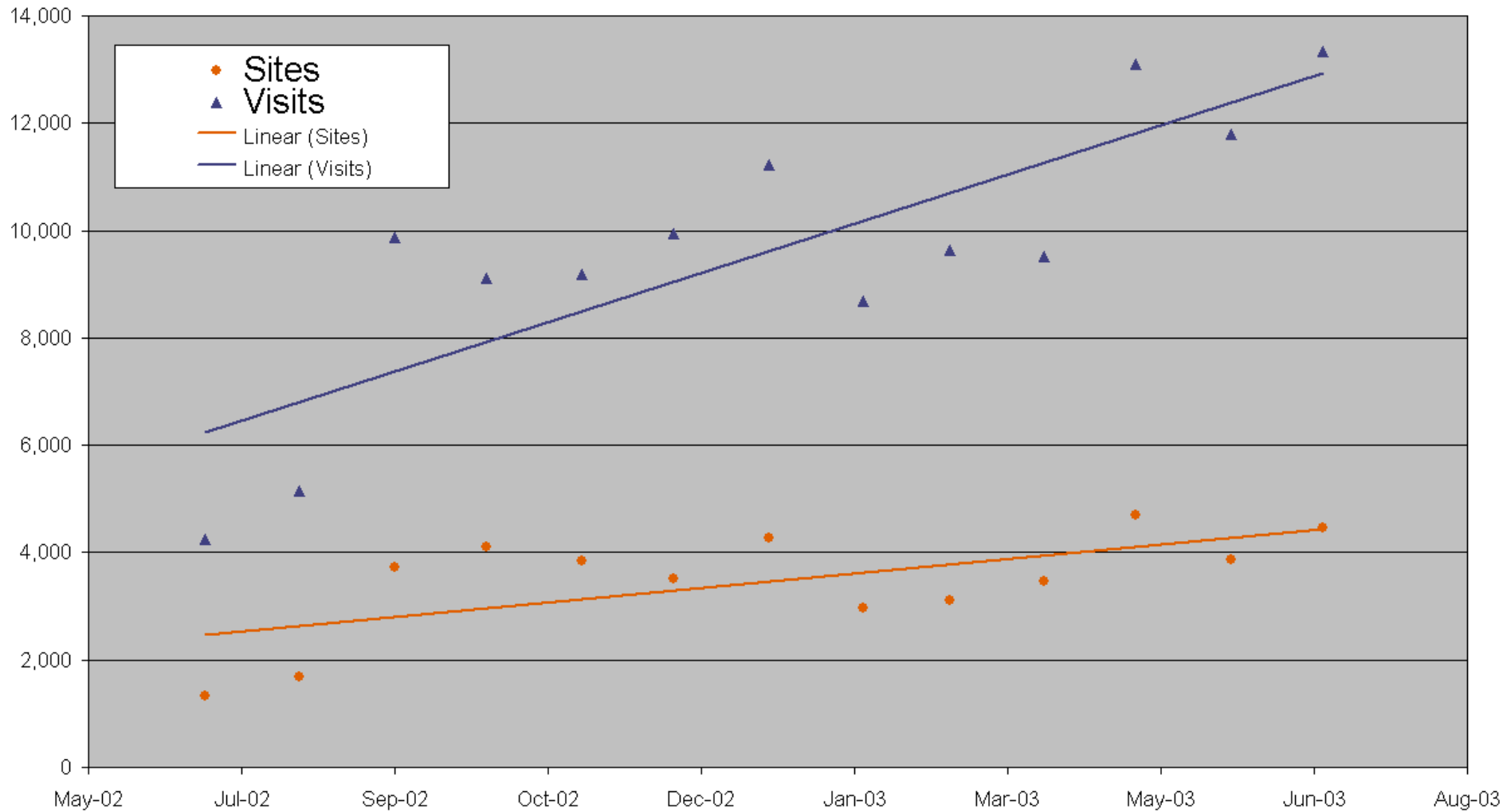
- Staff
- RIS Web Access
- Remote Route Collectors
- RIS Developments
- Ongoing Projects
- Epilogue

Hits, Files and Pages per Month for RIS Web Sites

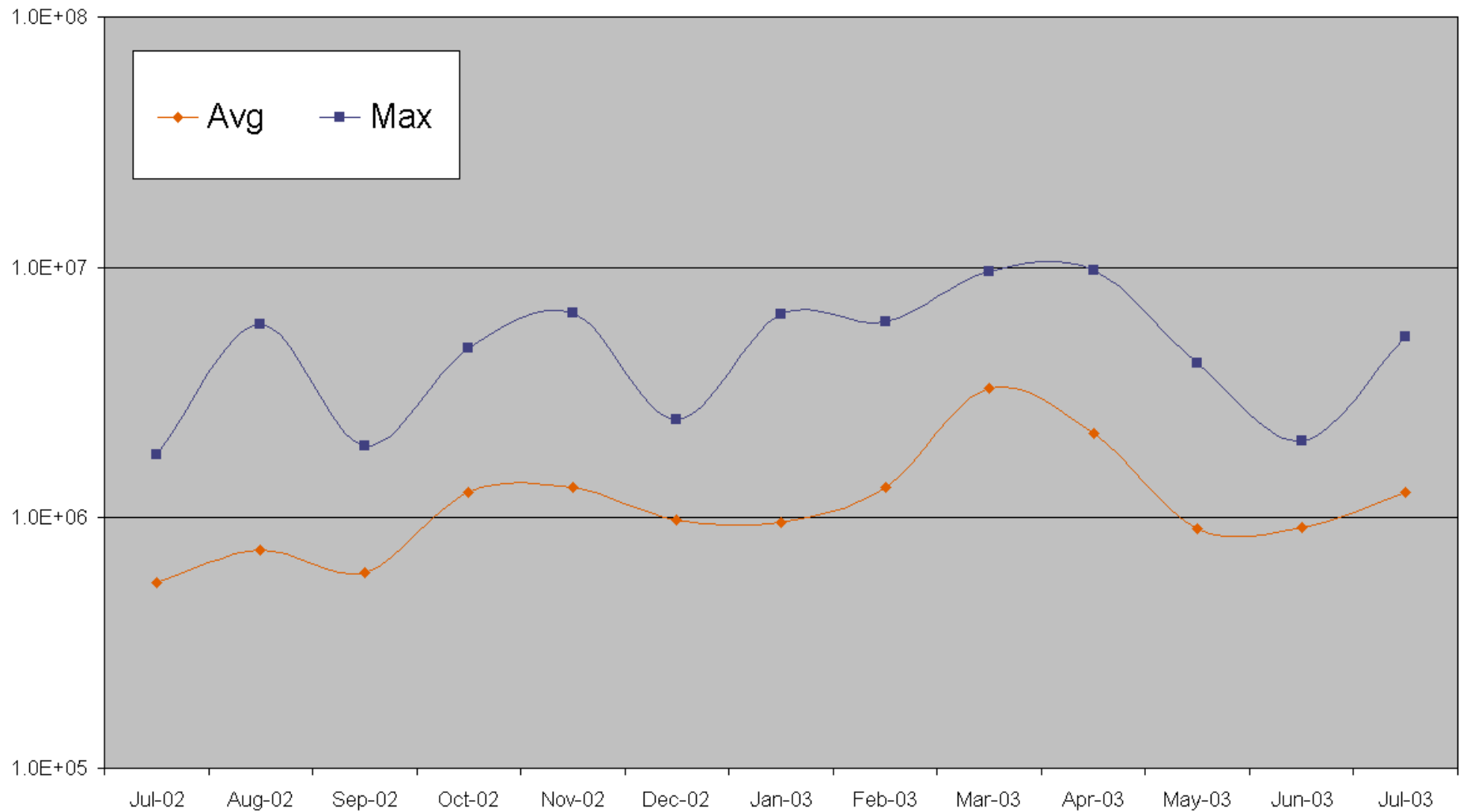




Sites and Visits per Month for RIS Web Sites (aggregate values)



Kbytes per Day for RIS Raw Data Site



Web Statistics (cont.)



Most Popular RIS Utilities (July, 2003)

1. RIS Looking Glass
2. ASinuse
3. Prefix Query

1 & 2 represented 80% of RIS Portal's hits



Overview

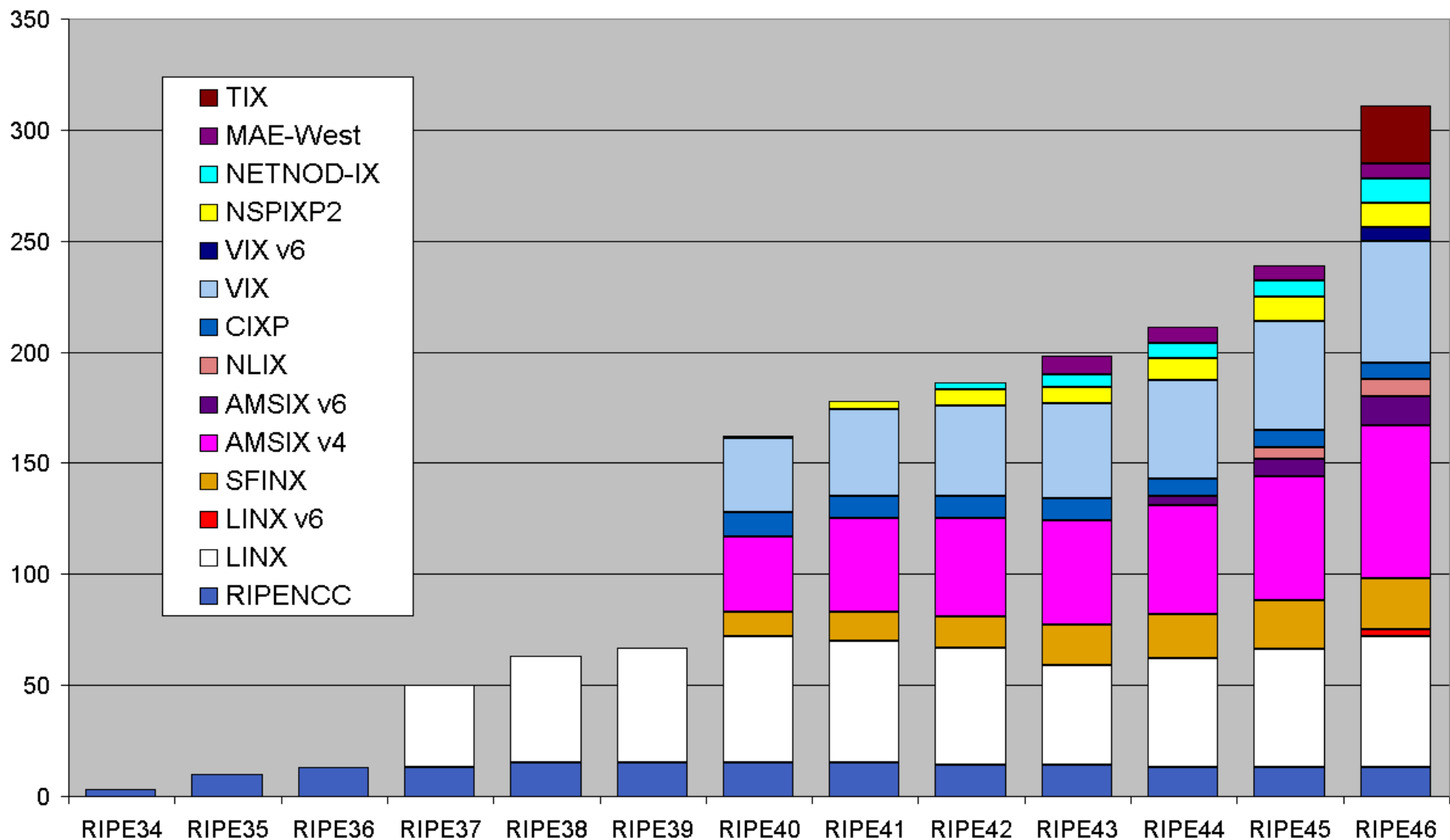
- Staff
- RIS Web Access
- Remote Route Collectors
- RIS Developments
- Ongoing Projects
- Epilogue

Remote Route Collectors

- Changes Since RIPE 44
 - Peering presence at **two** additional IXPs:
 - NL-IX (Additional NIC in RRC03)
 - TIX (RRC09)
 - RRC09, **our tenth collector**, in collaboration with Netlantis.org with help from Pascal Gloor
 - Currently raw data and Looking Glass, no dBase insertion yet
 - dBase insertion distributed to RRC boxes to **address scaling issues** as a part of the new RISng architecture
 - **“Facelift”** of RRC03, more powerful hardware installed
- New RRC planned for MIX (Sept/Oct, 2003)



Peering Sessions over Time



Total: 311(+72)



Overview

- Staff
- RIS Web Access
- Remote Route Collectors
- RIS Developments
- Ongoing Projects
- Epilogue





RISng Implemented

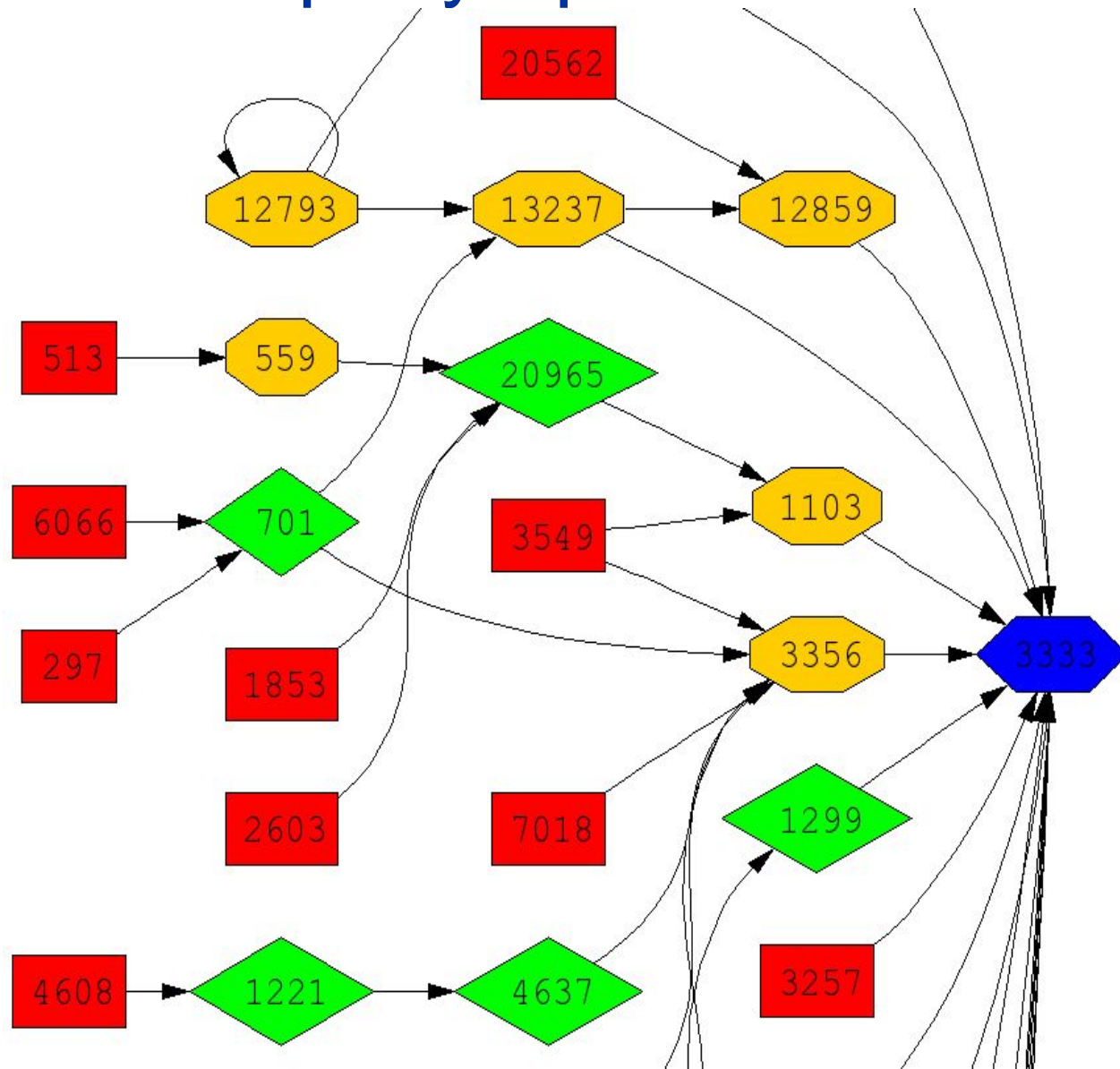
Noticeable Improvements for RIS Users

- **Higher frequency** of update dumps, which moves us closer towards near-real-time performance (every 5 minutes, previously 15 minutes)
 - Less lag between route collection and dBase insertion, “**on-the-fly**”
 - **IPv6 support**, no dBase insertion yet
 - Better query options
 - **More attributes** inserted into the RIS dBase
- Technical Presentation by James Aldridge at RIPE 44 available at URL:
 - <http://www.ripe.net/ripe/meetings/archive/ripe-44/presentations/ripe44-routing-risng/>

RISng – better query options...

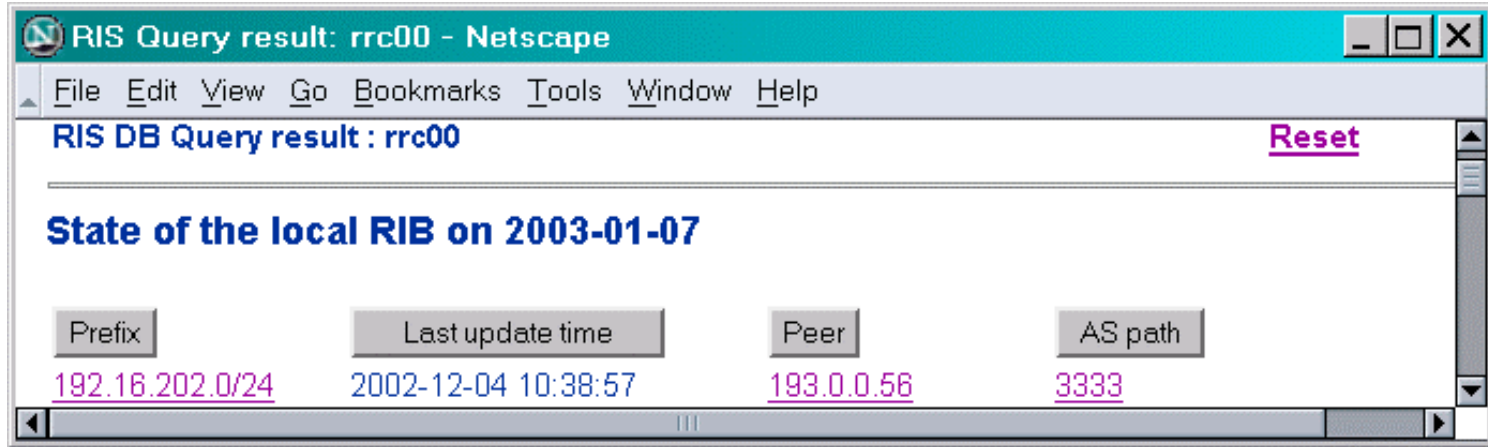
E.g. AS query
graphical output of
paths:

-  1 This is the origin AS
-  2 This is a transit AS
-  3 This is the start of an AS path
-  4 This is both the start of a path and a transit AS



RISng - more attributes...

RIS Classic:



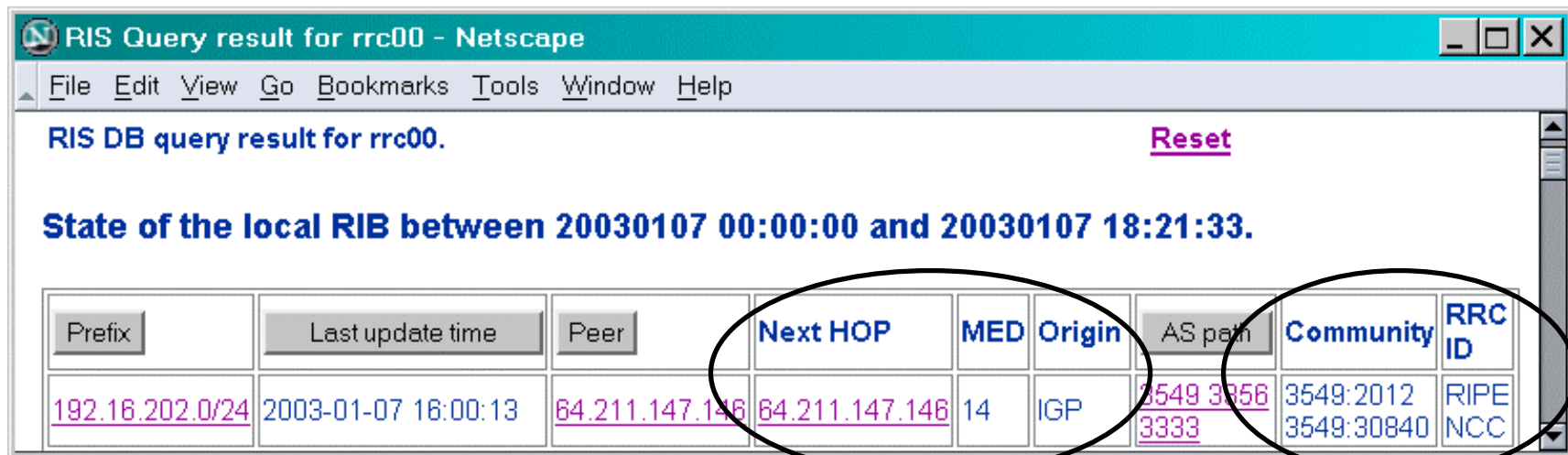
RIS Query result: rrc00 - Netscape

RIS DB Query result : rrc00 [Reset](#)

State of the local RIB on 2003-01-07

| Prefix | Last update time | Peer | AS path |
|---------------------------------|---------------------|----------------------------|----------------------|
| 192.16.202.0/24 | 2002-12-04 10:38:57 | 193.0.0.56 | 3333 |

RISng:



RIS Query result for rrc00 - Netscape

RIS DB query result for rrc00. [Reset](#)

State of the local RIB between 20030107 00:00:00 and 20030107 18:21:33.

| Prefix | Last update time | Peer | Next HOP | MED | Origin | AS path | Community | RRC ID |
|---------------------------------|---------------------|--------------------------------|--------------------------------|-----|--------|---|-------------------------|-------------|
| 192.16.202.0/24 | 2003-01-07 16:00:13 | 64.211.147.146 | 64.211.147.146 | 14 | IGP | 3549 3356 3333 | 3549:2012 3549:30840 | RIPE NCC |

Test Queries at URL: <http://www.ripe.net/ris/query.html>

Other Developments

- RIS Statistics Report Improvements
 - Comparison with Philip Smith's Weekly Routing Table Report
 - Most differences explained by the Weekly Routing Table Report analysing *snapshot* of a RIB while we're looking at RIS data for an *entire week*
 - Better explanations and definitions of measured variables
 - <http://www.ris.ripe.net/weekly-report/>
- “Lease-A-Beacon”
 - If you need different announcement or withdrawal patterns for RIS beacons during a definite time period then please do not hesitate to contact us
 - Web Form at URL: <http://www.ripe.net/ris/beaconform.html>



Overview

- Staff
- RIS Web Access
- Remote Route Collectors
- RIS Developments
- Ongoing Projects
- Epilogue

Status of RISv6

- More IXPs...
 - IPv6 peerings at also at **LINX** and **VIX**, previously only AMS-IX
 - **22 Sessions** altogether
- Raw data only, no queries yet
- We were hoping to make some CGIs available on the RIS web site but RISng took more time and resources than expected
- Priority for Lorenzo Colitti



Status of myASn

- Over **90 myASn accounts** since RIPE 44
- Test users are added to the myASn mailing list: myasntesting@ripe.net
 - Discussions and help
 - Bug Reports and other feedback for developers
- GUI Improvements
 - “Mason” for dynamic pages
 - Help/FAQ
- Other improvements in progress
 - Integration with RISng
 - Support for new alarms
- Currently only RRC03’s raw data processed, still **alpha**
- **Please help us create a useful service by signing up as a test user:**
 - <http://www.ris.ripe.net/myasn/>

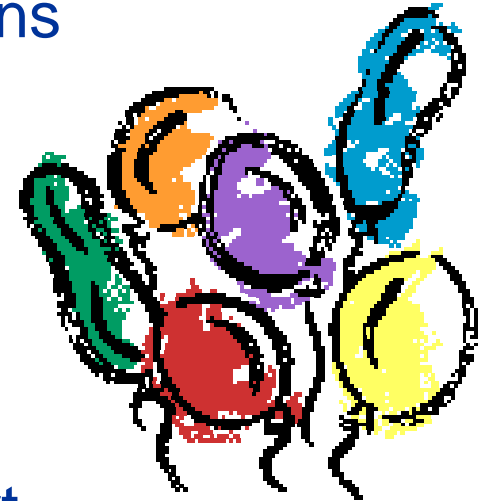


Overview

- Staff
- RIS Web Access
- Remote Route Collectors
- RIS Developments
- Ongoing Projects
- Epilogue

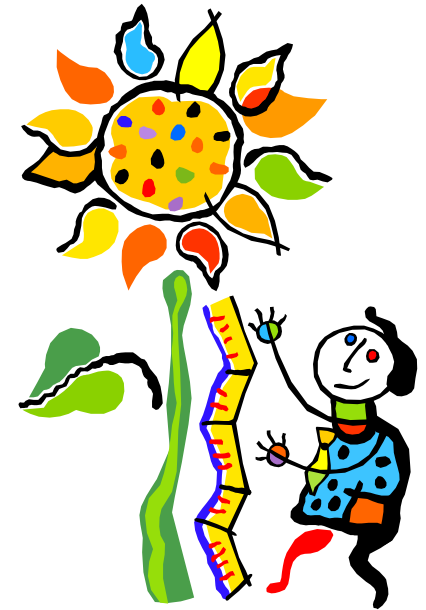
Summary

- Remote Route Collectors
 - **More data:** Over 300 peering sessions
- RIS Developments
 - RISng in production
 - Noticeable **improvements** for RIS users
 - Weekly RIS Statistics Report
 - Better explanations and definitions
 - Continuation of the RIS Beacon effort
 - “Lease-A-Beacon”
- Projects
 - myASn
 - Plenty of **test users** testing the prototype
 - RISv6
 - Peering presence also at **LINX** and **VIX**



Next Steps

- Turn myASn Into a RIS Service
 - Continue developing new GUI version
 - Integrate into RISng dBinsert process
 - Provide beta with some new alarm types
- RISv6
 - Extend IPv6 collection to other RRCs
 - IPv6 dBase insertion and CGI queries
- Integrate RIS into RIPE NCC's Information Services activity
- RRC's in Milan and, hopefully, the US



RIS demo

- Play with the myASn prototype
- Feedback please
- Expert help available
 - Tue: 17:30-18:00
 - Wed: 10:30-11:00
 - Thu: 15:30-16:00
- Comments: ris@ripe.net
- Peerings: rispeering@ripe.net
- Mailing list: ris-users@ripe.net
- URL: <http://www.ripe.net/ris>

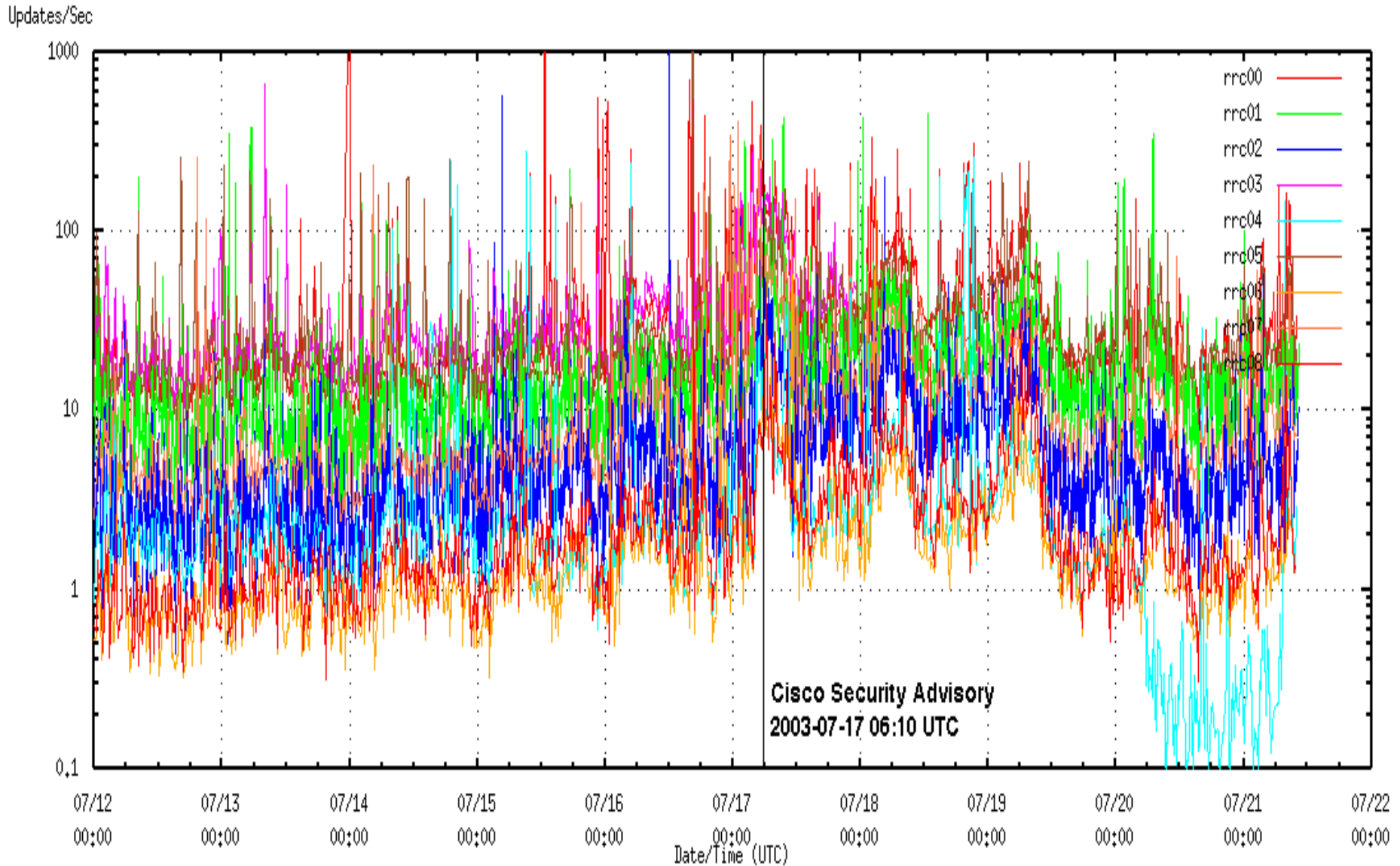


Questions, Discussion





Updates Per Second (12/07 – 21/07/2003)



Cisco Security Advisory
2003-07-17 06:10 UTC



Prefix Loss during US/CA Blackout (14/08/2003)

